

I-DETC

I-Detic

Technical Information



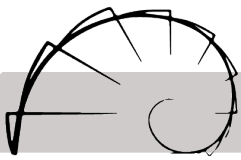
IP 68 The I-Detic is a high-resolution 3D scanner in a plug and play solution. This industrial grade scanner is designed to capture areas, objects and scenes in a handheld, tripod-based or robot-based operation. This IP 68 protected model is suitable for indoor and outdoor scenes and harsh environments to achieve high resolution and high quality full-colour 3D point clouds, 3D models and orthophotos. The whole set is designed for ease of use. To ensure robustness and easiness to clean, there are no external buttons, a radiation-free setup, shielded cables and IP 68 connectors enabling to add on external controls or old school cables. Its robustness, portability, and single-person operation are also certified for air travel and hand luggage to make it the ideal partner for limitless applications in 3D documentation and reconstruction.

I-Detic

Resolution	2 x 24 megapixels
Time to set up	Several seconds
Remote control	Radio remote control up to 30 m with a programmable timer
Cable control	Cable connector with 3.5 mm jack and handheld timer
Release extension	Can be extended for several 100 m (upon request)
Focus area	600 mm – infinity
File format	16-bits .tiff and 8-bits .jpg
Internal storage	256 GB
Optics	21 mm prime lenses with high precision calibration
Automation	Fully automated operation with exposure setting

3D Photogrammetry

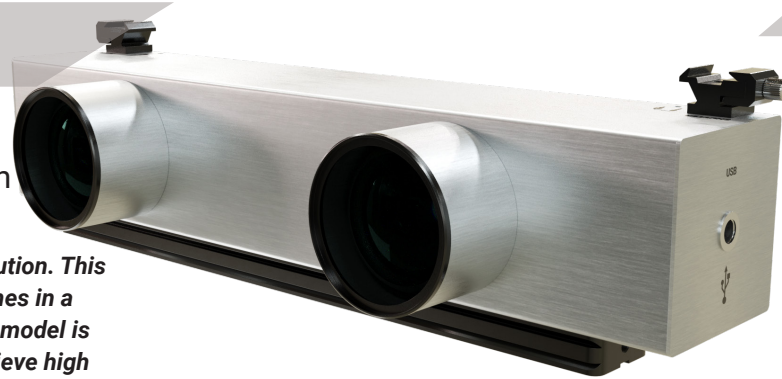
Accuracy	"± 0.2 mm" within a distance of 1 m
	"± 1 mm" (within a distance of 5 m)
Stereo-base distance	200 mm distance and 3-axis orientation calibrated
Dynamic Range	RAW image format 12.2 EV
Stereo pair export formats	JPG, TIFF
Orthophoto export format	JPG, TIFF, PNG, BMP
File format	16-bits .tiff and 8-bits .jpg
3D model export formats	OBJ, 3DS, PLY, STL, DXF, FBX, WRL, KMZ, PDF
3D point cloud export format	OBJ, PLY, XYZ, LAS, LAZ, DXF, E57, PDF



I-DETC

I-Detic

Technical Information



IP 68 The I-Detic is a high-resolution 3D scanner in a plug and play solution. This industrial grade scanner is designed to capture areas, objects and scenes in a handheld, tripod-based or robot-based operation. This IP 68 protected model is suitable for indoor and outdoor scenes and harsh environments to achieve high resolution and high quality full-colour 3D point clouds, 3D models and orthophotos. The whole set is designed for ease of use. To ensure robustness and easiness to clean, there are no external buttons, a radiation-free setup, shielded cables and IP 68 connectors enabling to add on external controls or old school cables. Its robustness, portability, and single-person operation are also certified for air travel and hand luggage to make it the ideal partner for limitless applications in 3D documentation and reconstruction.

Scanner Specification

Dimension	410 mm x 120 mm x 96 mm (l,w,h)
Weight	3.4 kg
Body material	Stainless Steel Housing
Working temperature	-10 °C to 50 °C (14 °F to 122 °F)
Relative humidity	up to 100%
IP Class	IP 68 waterproof, dustproof
Radical free	Yes
Cleaning	Designed to be cleaned with water and water-based cleaning agent (ask for specs)

Flash control

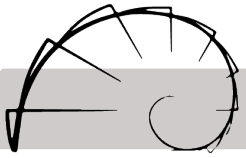
Remote	Radio remote controlled up to 30 m
Cable	cable with 3,5 mm jack 1m
Release extension	Cable extensions for several 100 m (upon request)

Battery-powered operation

Battery	No internal battery
Input	Between 5 V and 30 V DC 15 VA
Operation time	Only limited by the power supply
External battery	7,6 V NiMh battery pack 4800 mA
Carry for air travel?	NiMh Batteries certified for air travel

Studio powered operation

Input	100 -240 V 50-60 HZ
Output	12V DC 30 VA
IP Class	IP67



I-DE TIC

I-Detic

Technical Information



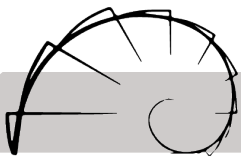
IP 68 The I-Detic is a high-resolution 3D scanner in a plug and play solution. This industrial grade scanner is designed to capture areas, objects and scenes in a handheld, tripod-based or robot-based operation. This IP 68 protected model is suitable for indoor and outdoor scenes and harsh environments to achieve high resolution and high quality full-colour 3D point clouds, 3D models and orthophotos. The whole set is designed for ease of use. To ensure robustness and easiness to clean, there are no external buttons, a radiation-free setup, shielded cables and IP 68 connectors enabling to add on external controls or old school cables. Its robustness, portability, and single-person operation are also certified for air travel and hand luggage to make it the ideal partner for limitless applications in 3D documentation and reconstruction.

Transportation case

Case design	Airtight waterproof and dustproof with pressure release valve
Material	Durable polypropylene
Dimension of case	660mm x 49mm x 230 mm (l,w,h)
Hand luggage	IATA certified for hand carry on aeroplanes and helicopters
Volume	51 Liter

Scope of supply

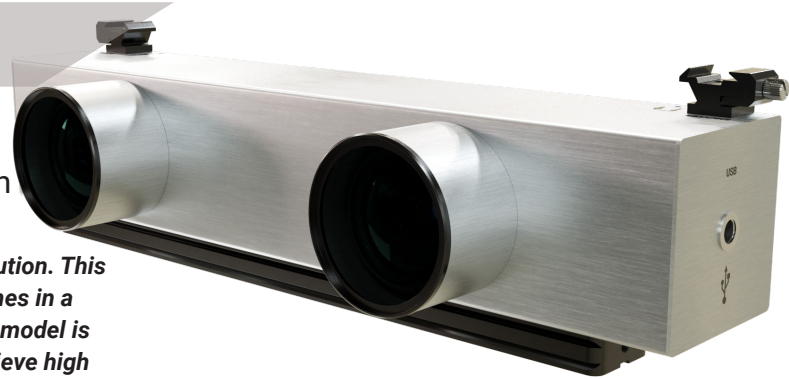
Scope of supply	<p>Plug and play package:</p> <ul style="list-style-type: none"> - Scanner with a quick-release tripod adapter - 2 magnetic exposure control buttons - 2 front glass protection caps - Watertight carrying case with foam inlay - Ball head 3/8-inch connector - Carbon monopod with 4 extensions - Power supply cable - External IP 67 studio power supply - Remote control transmitter 2 AA batteries - Remote control receiver 2 AA batteries - 3,5 mm jack connection cables - Remote flash control transmitter - Remote flash control receiver - 3,5 mm jack connection cables - Shielded USB download cable - Lens cleaning pen - Microfibre cleaning cloth - A4 print "Certificate of Conformity" - USB stick with software: <ul style="list-style-type: none"> • Download and image sorting software • Image pre-processing software • 3D model viewer • Operation manual as pdf
-----------------	--



I-DETC

I-Detic

Technical Information



IP 68 The I-Detic is a high-resolution 3D scanner in a plug and play solution. This industrial grade scanner is designed to capture areas, objects and scenes in a handheld, tripod-based or robot-based operation. This IP 68 protected model is suitable for indoor and outdoor scenes and harsh environments to achieve high resolution and high quality full-colour 3D point clouds, 3D models and orthophotos. The whole set is designed for ease of use. To ensure robustness and easiness to clean, there are no external buttons, a radiation-free setup, shielded cables and IP 68 connectors enabling to add on external controls or old school cables. Its robustness, portability, and single-person operation are also certified for air travel and hand luggage to make it the ideal partner for limitless applications in 3D documentation and reconstruction.

Software

Download software

Automated image downloading, sorting and renaming

Pre-processing software

Image optimisation & correction for 16-bits TIFF or 8-bits JPG

3D reconstruction software

Windows and Mac compatible 3D software to create 3D point clouds, 3D models, orthophotos

Shipping data

Air travel

Certified for air travel

Net weight

13.1 kg (with all accessories in transportation box)

Gross weight

14 kg including packaging material

Shipping dimensions

605 mm x 435 mm x 230 mm